

Pyramid Solutions' NetStaX™ EtherNet/IP Scanner Simulation Tool (EIPScan) is a PC/Windows™ application that simulates an EtherNet/IP Scanner Class device (connection client & server) to enable product engineers to test and debug EtherNet/IP connected products under development.

EIPScan provides EtherNet/IP I/O Server, I/O Client, Message Server & Message Client functionality. EIPScan is capable of originating a variety of I/O connections based on the user set connection configuration. EIPScan is compatible with Rockwell Software's RSNetWorx™ for EtherNet/IP for local or remote network configuration.

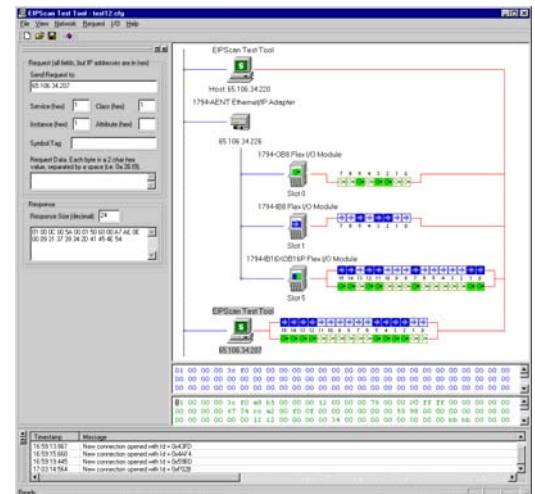
For additional information and pricing, please call 248-549-1200 ext. 231 or email gbeal@pyramidsolutions.com.

EIPScan Features & Description

EIPScan Features:

- ❑ **Simulation & Testing**
 - √ View Input data
 - √ View and modify Output data
 - √ Graphically add & display devices on the network
 - √ Configure & schedule connections
 - √ Automated testing of explicit & implicit connections
- ❑ **EtherNet/IP Compatibility**
 - √ Scanner Class (client / originator) functionality
 - √ UCMM (unconnected) messaging client & server
 - √ Class 3 (connected) messaging client & server
 - √ Class 1 (I/O) connection client & server
- ❑ **Platform Compatibility**
 - √ Microsoft Windows NT, 2000 or XP
 - √ Minimum PC: Pentium II, 233MHz
- ❑ **Supported / Included Objects**
 - √ Message Router
 - √ Connection Manager
 - √ Identity
 - √ Ethernet Link
 - √ TCP/IP
 - √ Port
 - √ Assembly
 - √ Connection Configuration Manager
- ❑ **Product includes:**
 - √ EtherNet/IP Scanner Simulation Tool executable
 - √ User Reference Manual
 - √ EDS file compatible with RSNetWorx for EtherNet/IP

- ★ *Visual Connection & Data GUI*
- ★ *Aids in Development & Testing*
- ★ *Rich set of features*
- ★ *Client & Server Functionality*



EtherNet/IP is a registered trademark of ODVA
 RSNetWorx is a registered trademark of Rockwell Software
 Windows is a registered trademark of Microsoft Corporation